

WE SIMPLIFY THE  
**COMPLICATIONS**  
IN SUPPLY CHAIN



Cargo365cloud

*"logistics Simplified"*



## ABOUT PRODUCT

### ABOUT CARGO365CLOUD

Transport Management Software allows transporters to automate their business requirements regarding growing productivity, cost-effectiveness, efficiency and reliability. It helps in business expansion by automating the entire process and managing the business with clearness in cost as well as resources. Simultaneously, It helps the organization in cost reduction through better route planning and load optimization. It boosts process execution and accountability by adding transparency to the transportation chain process. Connectivity of transport and their customer through a mobile application and web portal.



### ABOUT CITTA

Citta was founded in 2009 with a mission to succeed by helping our clients succeed. Citta's mission is to create effective and cutting-edge solutions, helping clients maximize their reach online and offline. Citta believes in staying relevant by continuously evolving itself to reach the highest level of excellence.

### LOGISTICS ERP FACT & STATISTIC

# 90-95%

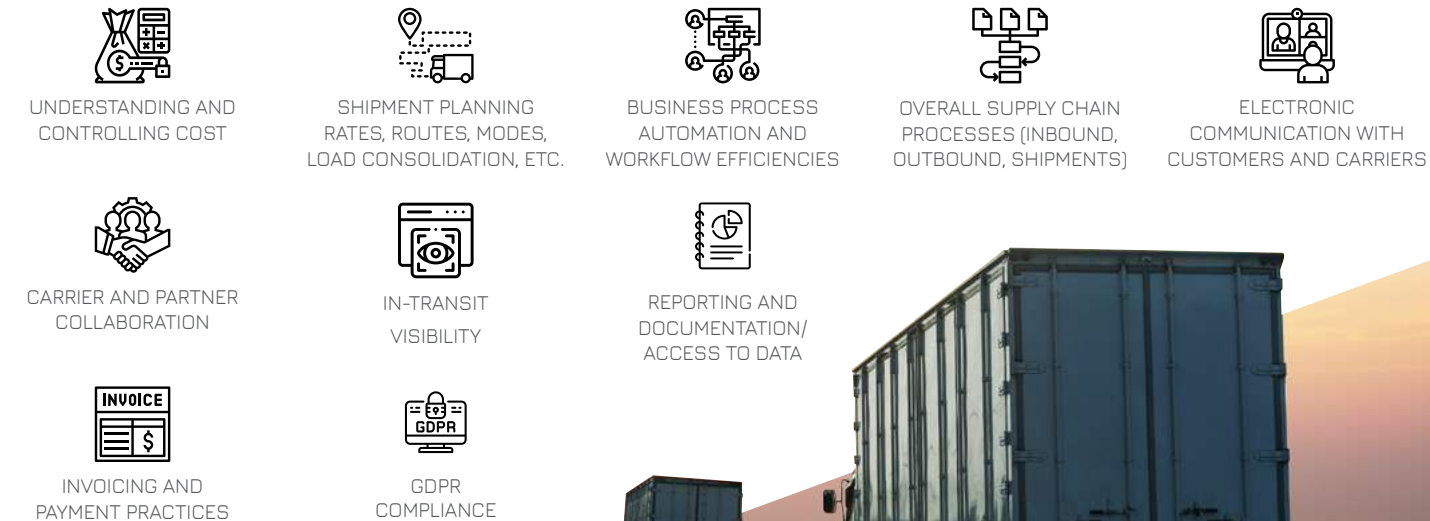
By using a transportation management system (TMS) solution, a shipper can reduce freight invoice payments by 90-95% - **Cerasis Inc.**

## INDUSTRY PAIN AREAS

### BUSINESS CHALLENGES



### IMPROVEMENT ANALYSIS





# PRODUCT MODULES //



## TASK MANAGEMENT

It helps individuals & business effectively organize their tasks. With a simple to use interface, users can begin scheduling, assigning & creating tasks in minutes.

## RECRUITMENT MANAGEMENT

A recruitment management system is a set of modules to help you in staffing and recruitment operations automatically.



## LEAVE MANAGEMENT

It helps to maintain both manual credit and debit entry of leaves and update the current balance of leaves. It can also keep a track of leave encashment and consider excess leaves a loss of pay.

## ATTENDANCE MANAGEMENT

It provides a feature to keep a record of attendance inside the system eliminating manual effort consuming tasks. It is also linked with the school academic year.



## PAYROLL MANAGEMENT

It helps individuals & business effectively organize their tasks. With a simple to use interface, users can begin scheduling, assigning & creating tasks in minutes.

## CRM

The module allows an organization to manage its relations with the customer in a structured manner.

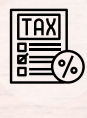


## BANKING MODULE

Helps the organization in managing its all banking services such as fund transfers, account opening, passbook management, etc from the ERP itself.

## ADMIN MODULE

it allows the system administrator to set up the back-end of the system and perform basic system configuration, mainly the definition of predefined drop-down fields, etc.



## TAXATION MANAGEMENT

This module provides organizations with centralized tax configuration, management, and reporting with the integration of the accounting module.

# PRODUCT MODULES //



## SALES MANAGEMENT

This module is used to perform the operation and document-based tracking of all sales transactions.

## VOUCHER MANAGEMENT

The process of creating a payment or receipt voucher is an essential function for many businesses this module helps streamline and automate these processes.



## SOCIAL MEDIA MANAGEMENT

The module helps in managing different social media accounts on a single platform with BI-based dashboards and customized reports.

## EMPLOYEE PROFILE MANAGEMENT

The module helps the organization to automate their current employee profiling system in a more structured way for better record access and decision making.



## PERFORMANCE MANAGEMENT

It enables managers to track and monitor the performance of individual employees as well as departments, and the overall organization.

## CONFERENCE MODULE

The module helps in conducting, scheduling, and monitoring video conferences both within & outside the organization.



## VISITOR MANAGEMENT

It helps in controlling, monitoring, and maintaining the visitor's flow with a systematic and accurate database to access.

## EMPLOYEE MONITORING MODULE

The module helps in monitoring employee working both inside & outside office premises by screen record, IoT tools, video recording, etc.

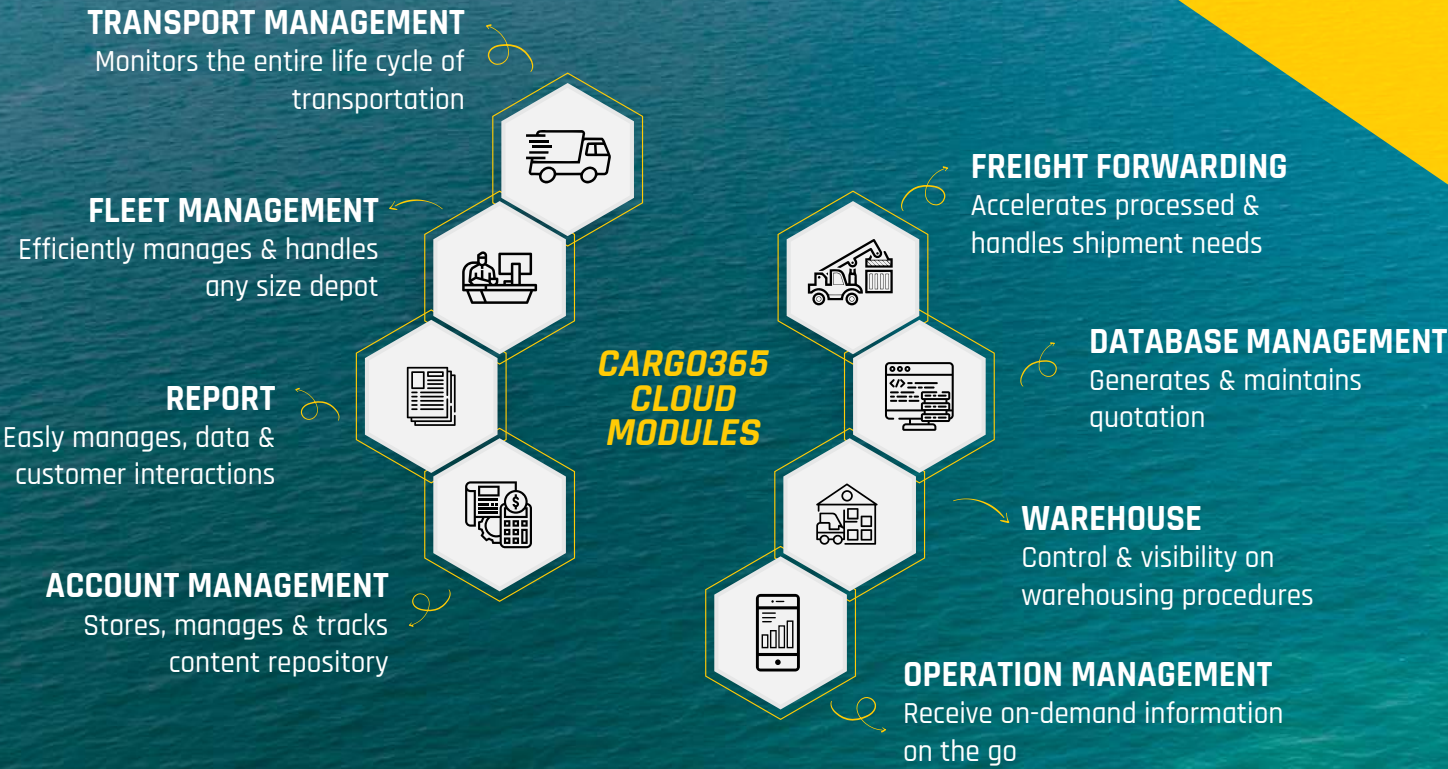


## APPROVAL MANAGEMENT

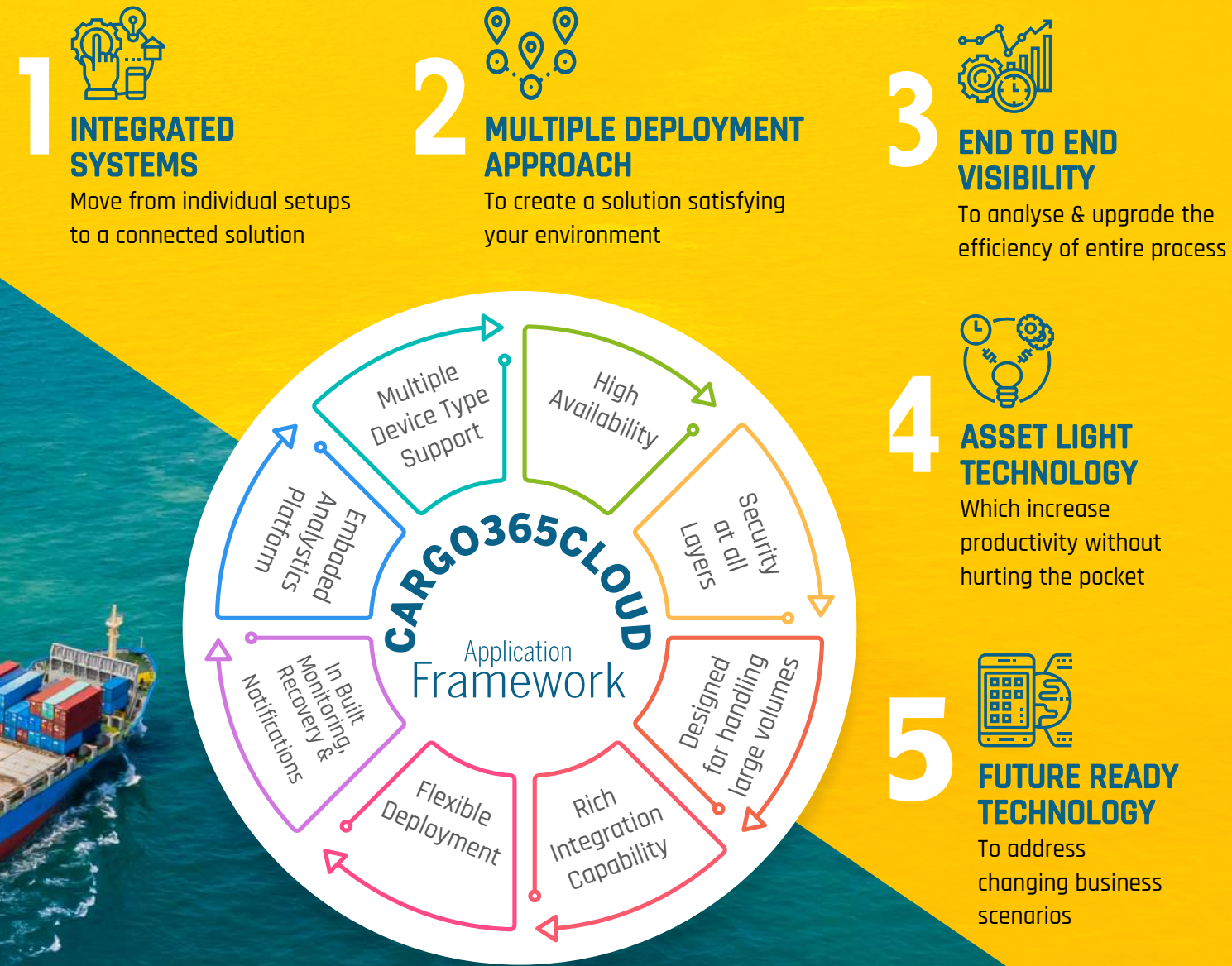
The module digitalizes and automates your current approval mechanism for quick & structured decision making.



# PRODUCT MODULES



# INDUSTRY PROCESS & SOLUTION





# PRODUCT FEATURES



FASTag  
Integration

IoT  
Integration

Cloud  
Computing

Artificial  
Intelligence

OCR  
Integration

BI based  
Dashboard

Payment Gateway  
with Trusted Banks

Live  
Tracking

Inter branch  
Synchronization

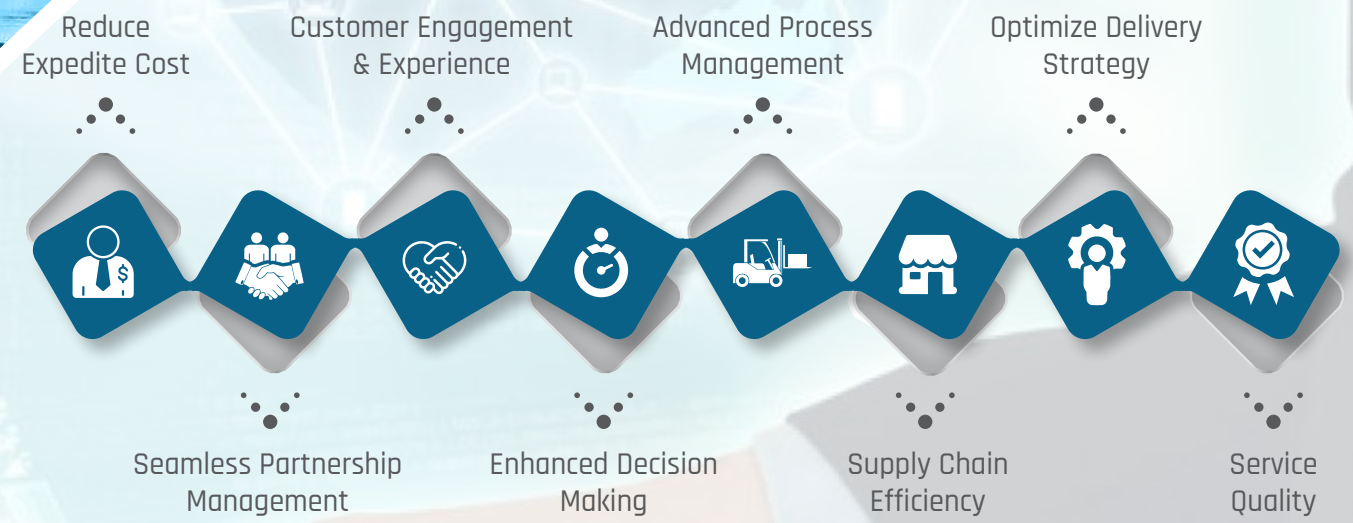
Chat  
Bots

3rd Party ERP  
Integration

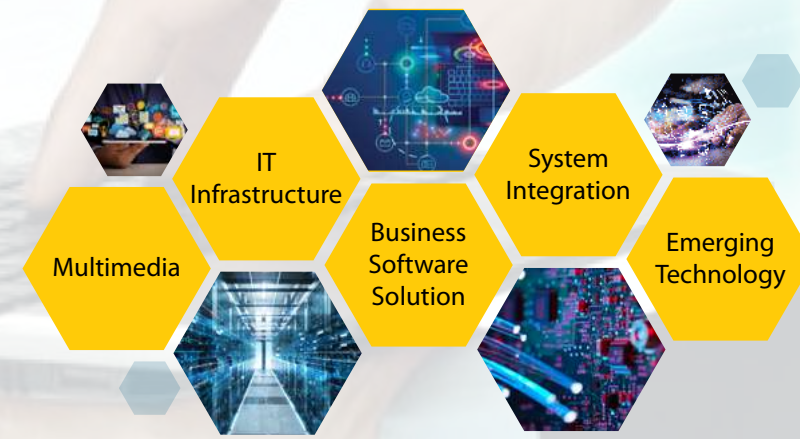
Mobility  
Apps

QR & Barcode  
Integration

# PRODUCT BENEFIT



## ADD ON VALUES



**45%**

saw an increase in perfect order fulfillment with use of TMS and 43% saw a reduction in the cost to process a customer with TMS.

- Aberdeen Group



## MOBILITY

While moving a lot of things from one place to other, mobile transport app can help in managing operations easily.

Below are the features and app view of Mobile application for admin:

## CONTROL IN YOUR HANDS



Dashboard



Survey  
Form



Lorry  
Receipt



Live  
Tracking



Utilities



Multiple  
Languages



Fingerprint  
Accessibility

## LOGICALLY CRAFTED AS PER YOUR NEED

## SOLUTION VIEW



Outward Challan Screen

Trip Form Screen

Disclaimer : All Pictures shown are for illustration purpose only. Actual product may vary due to product enhancement.



## OUR INDUSTRIES

### OVER 10 YEARS WE ARE AUTOMATING PROCESSES IN THE WORLD

With a presence in 17+ countries and 200+ talents on board, Citta is serving mostly every industry. From Retail to Logistic we are believed & recognized IT partners in 11+ industries.



Logistics



Education



Healthcare



Hospitality



Retail



E-Commerce



Finance



Manufacturing



Courier



Jewellery



Pharmacy



Construction

## OUR SERVICES

### WE ARE COMMITTED TO QUALITY

Business Consultancy - Information Technology - Outsourcing Services



#### INSIGHT Business Solution Services

- BPO (Business Process Outsourcing)
- Enterprise Architecture (EA)
- Reseller Programmes
- Consulting Services
- Security & Risk Management
- Cyber Security
- PAAS (Platform as a Service)
- IAAS (Infrastructure as a Service)
- SAAS (Software as a Service)
- SSL Certificates



#### EXIGENCY Software Services

- Mobile Application Development
- ERP Solutions
- Application Maintenance
- Application Development
- Quality Assurance & Testing
- Database Services
- Resource Hiring
- POS Software Services
- Product Development



#### ELEMENTAL System Integration & Infrastructure

- Enterprise Data Storage
- Server Solutions
- Cloud Services
- Data Center Solutions
- Disaster Recovery Solutions (DRaaS)
- Licensed Software Solutions
- Network Management & Integration
- Remote Infrastructure Management
- Messaging & Collaboration
- Helpdesk Services
- Desktop Management Services
- Web Hosting & Registration Services
- Workplace & Pandemic Management
- Telephony Services



#### INNOVATE Emerging Technology

- Machine Learning & Robotics
- AI & BI Integration
- Biometric Solutions
- Surveillance Solutions
- IoT based Solutions
- Big Data
- Automation
- BlockChain



#### BRANDING Marketing & Branding Services

- Website Design
- Brand Design
- Graphic Design
- Corporate Presentations
- 2D/3D Character Animation
- Digital Marketing
- SEO / SMO
- Flash Animations
- Mobile Games
- Branding & Marketing Videos

# 57.5%

In a survey of small businesses with 50-99 employees, 57.5% strongly agreed on investing in cloud and hosted solutions.

- Panorama

## CUSTOMIZATION & DEPLOYMENT

### Deployment Type we Offer

#### Dedicated Server:

It offers immense power and flexibility, but usually comes at a premium. Your options here could include an upgrade to a virtual private server (VPS) or a dedicated one.

#### Cloud:

Working in cloud-based environments makes it easy to create and build towards establishing a high degree of integrated functionality plus the deployment is much simpler, faster and less expensive as no on-site infrastructure is required.

#### Own Premises:

It's best for those who don't prefer internet glitches and the entire solution is deployed on a static IP hence zero dependency on third party servers.

Daily based model

Monthly based model

Hourly based model

Fixed Cost

Engagement Modes

Resource Engagement : Technology base & Contract base

\*(SLA & NDA would be entertained)

## CLIENTS

Jayanti  
Road Carriers

EdiSafe Xpress  
Your Parcel Delivery Expert

KT  
KATARIA TRANSPORT

Bhagwati  
Roadlines Pvt Ltd

BHARDWAJ  
CAREWAYS

Nitco  
Always on the move...

KATARIA  
LOGISTICS

TRUE VALUE

GFL  
Where All Cargo Matters

SLS  
SKYWAYS GROUP

SLS  
SUBSIDIARY LOGISTIC SOLUTIONS

MAS  
FINANCIAL SERVICES LTD  
The Power of Distribution

GALLOPS AUTOLINK  
TATA MOTORS

GG  
LOGISTICS & TRANSPORT LTD.  
BRANTFORD, ON.

OM-SAI  
CARGO

ORANGE  
MARITIME LLP

K

PERPETUAL NIGINI  
CONTROL. TRACKING. MANAGEMENT. GROWTH.

MARKET  
Trans & Logistics Pvt. Ltd.  
Value-adding solutions

satGuru  
TRAVEL

CHIRIPAL

TRAJECT  
Logistically Logical

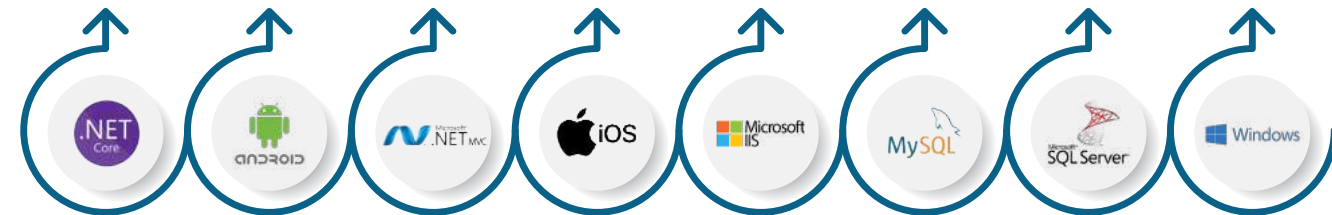
SHREE HARI  
ENGINEERING

GULF LINE

omniexpress

2000+ CLIENTS

### TECHNOLOGIES WE USE



### OUR BUSINESS ALLIANCES

ICICI Bank  
Business Banking

IDFC FIRST  
Bank

Google

Microsoft

Apple

amazon

TATA



# End to End **Solution** for your entire **Supplychain**



Forwarding



Customers



Optimization



3PL/4PL



Geocompliance



Warehouse



Long haul



Transshipment



Distribution



Home delivery



## Cargo365cloud

*"Logistics Simplified"*

911, The Times Square Arcade, Opp. Rambaug,  
Nr. Baghban Party Plot, Thaltej-Shilaj Road, Ahmedabad. 380059

### AWARDS & RECOGNITIONS



### OUR INTERNATIONAL BRANCH OFFICES



+91 79 4899 1546



+91 81 4029 7820



business@cittasolutions.com



cargo365cloud.com



cittasolutions.com

*"A Solution by Citta Group"*